



Blazing speed!  
Cool price!  
Easy to use!

Print. Copy. Fax. Scan.



THE DOCUMENT COMPANY  
**FUJI XEROX**

**Supplies**

Description Order No.

All-in-One Cartridge: CWAA0683  
SmartKit® Print Cartridge 3K @5%  
ISO 19752

For more information or for  
your nearest authorised  
Fuji Xerox Printers reseller,  
visit our web site or call:

**Australia**  
1300 793 769

**New Zealand**  
0800 993 769

**China**  
(86) 10 5824 5000

**Hong Kong**  
(852) 2 513 2646

**Korea**  
(82) 2 528 5807

**Malaysia**  
(60) 3 7957 9988

**Singapore (ASEAN Headquarters)**  
(65) 6351 0118

**Taiwan**  
(886) 2 8788 1758

**Thailand**  
(66) 2 617 6700

**Vietnam**  
(84) 8 829 0038

[www.fxprinters.com](http://www.fxprinters.com)

**CONFIGURATIONS**

	WorkCentre® PE220
<b>Speed</b>	Up to 20 ppm
<b>Duty Cycle</b>	Up to 5,000 pages/month
<b>Paper Handling</b>	
Paper input	150-sheet main tray, 1-sheet bypass tray
Automatic document feeder	30 sheets A4/Letter
Paper output	50 sheets, face down
<b>Copy</b>	
First-page-out time	11 seconds
Resolution	600 x 600 dpi
Copy features	2-up, 4-up, collation, auto-fit, clone, poster, multi-copy, ID card copy
<b>Print</b>	
Resolution	600 x 600 dpi
Processor/PDL GDI	GDI
Connectivity	USB 1.1 (compatible with USB 2.0), IEEE 1284 Parallel
<b>Scan</b>	
Resolution	600 x 600 dpi, up to 4800 x 4800 dpi enhanced
<b>Fax</b>	
Speed	3-second transmission speed at 33.6 Kbps
Resolution	203 x 98 dpi (Standard), 203 x 196 dpi (Fine/Photo), 300 x 300 dpi (Superfine), 200 x 200 dpi (Color)

**SPECIFICATIONS**

**Copying**  
Speed: Up to 20 cpm Letter/A4  
Resolution: 600 x 600 dpi  
First Copy Out: 11 seconds

**Printing**  
Technology: Laser black-and-white  
Speed: 20 ppm Letter/A4  
Resolution: 600 x 600 dpi  
First Print Out: 11 seconds  
Page Description Language (PDL): GDI  
Memory: 10 MB  
Print Drivers: Windows 95, 98, ME, 2000, XP, Mac OS 10.3, Linux  
Interfaces: USB 1.1 (compatible with USB 2.0), IEEE 1284 Parallel

**Scanning**  
Compatibility: TWAIN standard (Windows 98, ME, 2K, Mac, Linux), WIA standard (Windows XP)  
**Scan Resolution**  
Optical: 600 x 600 dpi  
Enhanced: Up to 4800 x 4800 dpi  
**Depth**  
Color: 24-bit  
Mono: 1-bit for line art, halftone  
Grayscale: 8-bit  
**Bundled Scanning Software**  
PaperPort® SE 10.0  
OmniPage® SE 3.0

**Faxing**  
Compatibility: ITU-T Group 3, ECM  
Transmission Speed: Approx. 3 seconds/page at 33.6 Kbps  
Modem Speed: 33.6 Kbps  
Data Compression: MH/MR/MMR, JPEG (color)  
Memory: 2 MB (approximately 160 pages)\*  
**Resolutions**  
Standard: 203 x 98 dpi  
Fine: 203 x 196 dpi  
Superfine: 300 x 300 dpi  
Photo: 203 x 196 dpi  
Color: 200 x 200 dpi

**Media Handling**  
**Input Paper Capacity**  
Main Tray: 150 sheets  
Minimum size: 76 x 127 mm  
Maximum size: 216 x 356 mm  
Weight: 60 - 90 gsm  
**Bypass Tray:** 1 sheet  
Minimum size: 76 x 127 mm  
Maximum size: 216 x 356 mm  
Weight: 60 - 165 gsm  
**Document Handler:** 30 Sheets  
Width: 142 - 216 mm  
Length: 148 - 356 mm  
Weight: 60 - 90 gsm  
**Output Capacity:** 50 sheets (face down)  
**Media Types:** Plain paper, envelopes, labels, postcards, transparencies

**Physical Dimensions (W x D x H)**  
438 x 374 x 368 mm  
Weight: 10.4 kg

**Operating Environment**  
**Temperature**  
Maximum Range: 10° - 32°C  
Recommended Range: 16° - 30°C  
**Humidity**  
Maximum Range: 20 - 80%  
Recommended Range: 30 - 70%  
**Electrical**  
Power: 220-240 VAC, 50/60 Hz, 2.5 A  
Maximum Power Consumption: 350 watts  
ENERGY STAR® compliant

**General Specifications**  
Memory: 16 MB  
Device Management: ControlCentre™ 5.0  
All-in-One Cartridge: SmartKit® Print Cartridge 3k @ 5% ISO19752  
Duty Cycle: 5,000 (maximum)  
Recommended Average Monthly Volume: Up to 750 pages  
Safety Agency Approvals: UL Safety and ETL Semko

\*Based on CCIT No. 1 chart at standard resolution.

Xerox printers. **Xpect** more.

For more information, please contact:



©2005 Fuji Xerox Printers. All rights reserved. Contents of this publication may not be reproduced without permission of Fuji Xerox Printers. Xerox, The Document Company, the stylized X, Phaser, ControlCentre and PhaseSmart are registered trademarks/trademarks of Xerox Corporation. All other names mentioned are trademarks of their respective companies. The information in this brochure is subject to change without notice. Errors and omissions excepted. Fuji Xerox Printers practice a policy of continued product development, this means that product specifications may incorporate innovations and/or enhancements resulting from ongoing research & development (and may vary from those specified in brochures at time of printing). In keeping with normally accepted commercial practices, the purchaser is advised to both confirm product specifications, and satisfy themselves as to product performance and exact configuration (to suit each particular requirement) before purchase. Fuji Xerox Printers will not accept any liability (product related and/or resulting from product usage) where such due diligence has not been performed and the incorrect product has been purchased.

WorkCentre PE220  
Multifunction Laser Printer

THE DOCUMENT COMPANY  
**FUJI XEROX**



WorkCentre PE220  
Multifunction Laser Printer

print | copy | scan | fax



**Fuji Xerox Printers**



# WorkCentre PE220

Multi-function Laser Printer

print | copy | scan | fax

## All You Need to Do It All.

The new WorkCentre PE220 performs any job fast. A new, easy-to-use interface puts control of essential features right at your fingertips. Get all the functions of a printer, copier, scanner, and fax in one hard-working package at a price you can afford.

The WorkCentre PE220. The wise choice for a fast and efficient multifunction laser printer that fits in anywhere.

### Sharp Laser Prints

- Fast 20 prints-per-minute
- True 600 x 600 dpi
- Multi-platform compatibility (Windows, Macintosh, and Linux)
- First-print-out-time of 11 seconds

### Clean Digital Copies

- Fast 20 copies-per-minute
- 30-sheet Automatic Document Feeder
- Scan-once-print-many
- Electronic collation
- First-copy-out-time of 11 seconds

### Beautiful Color Scans

- Up to 4800 x 4800 dpi resolution\*
- Scan to PC via USB or parallel
- Document management and OCR software included

### Fast Laser Faxes

- Fast 3-second/page sending at 33.6 Kbps
- Send color faxes
- 72-hour power back-up



## The perfect partner for you or your office.

The new WorkCentre PE220 has the features and speed for any work environment. Combining four-function versatility and desktop convenience with superb ease-of-use, the WorkCentre PE220 is loaded with timesaving and innovative features at a very affordable price.



### Big performance in a small fit

The space saving design of the WorkCentre PE220 allows it to fit into just about any work environment making it ideal for:

- Small businesses
- Small workgroups
- Branch offices
- Individual users



### Clean, efficient laser printing

At print speeds of up to 20 ppm\* the WorkCentre PE220 keeps your office humming. Produce razor-sharp grayscale laser prints at a true 600 x 600 dpi. The perfect printer for presentation-quality reports, OHPs, and other business documents.

\* A4-size document



### Razor sharp copying

Copies never looked so good and copying was never so fast. Scan once and make up to 99 copies from a single document at up to 20 cpm. The WorkCentre PE220 also comes with two great new features – ID Copy and Auto-Fit.

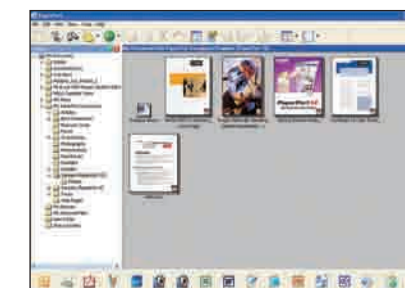
- ID Copy automatically prints both sides of a business card, ID card, or other small, two-sided document on the same side of a page.
- Auto-Fit ensures no paper wastage by automatically reducing or enlarging the original to fill the entire printable area of the paper.



### Great color and monochrome scanning

The 24-bit color and 8-bit grayscale 600 x 600 dpi scanner\* reveals every nuance of your originals. For easy scanning and document management the WorkCentre PE220 comes with ScanSoft PaperPort® SE 10.0 and OmniPage® SE 3.0. Additionally, the WorkCentre PE220 is TWAIN compatible for Windows 98/ME/2000, Macintosh, and Linux and Windows Image Acquisition (WIA) compatible for Windows XP.

\*4800 x 4800 dpi enhanced



### Full-featured fax capability

The WorkCentre PE220 makes faxing quick and easy. Send faxes at speeds of up to 3 seconds per page. Store up to 160 pages in the roomy 2 MB fax memory. A variety of resolution modes are provided for any kind of document (Standard, Fine, Superfine, Photo, and Color). You'll also appreciate the included ControlCentre 5.0 software that makes fax set up and configuration a breeze. Use the ADF for single sheets up to 8.5" x 14" or send bound documents from the flat-bed scanner.

